

D.

DEFINITIVE TECHNOLOGY

# Wireless Collection



 Adapt

Wireless Music Adapter

Owner's Manual

# D.



## Adapt

### Audiophile Grade Wireless Speaker

Definitive Technology's W Adapt is an easy, simple upgrade that transforms virtually any audio system into a streaming music system. The W Adapt connects easily with nearly any home theater receiver using the latest digital and analog connections. Hookups include an auxiliary input to connect to Blu-ray, DVD or cable/satellite box, digital outputs for connecting to a receiver, an optical input to connect from a TV and much more.

#### The Definitive Technology Wireless Collection

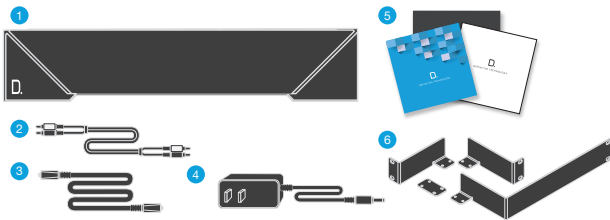
The W Adapt is part of Definitive Technology's Wireless Collection, which is an all-encompassing solution for distributing audiophile-grade music anywhere or everywhere in your home. The W Adapt can be used as a stand-alone wireless product or as part of a family of wireless products. Stream your favorite music services, internet radio and your personal digital music library all from your smartphone, tablet or computer. What's more, the streamlined setup process allows you to be up and running in a matter of minutes. And because you can Mix-and-match speakers with the open DTS Play-Fi® technology standard, future-proofing your technology has never been easier.

### Contents

What's in the Box	3
Getting Started with Wireless Streaming	3
Apps	4
Playing Music	5
Adding Multiple Devices	5
Specifications	6
Technical Assistance & Contact	6

## What's in the Box

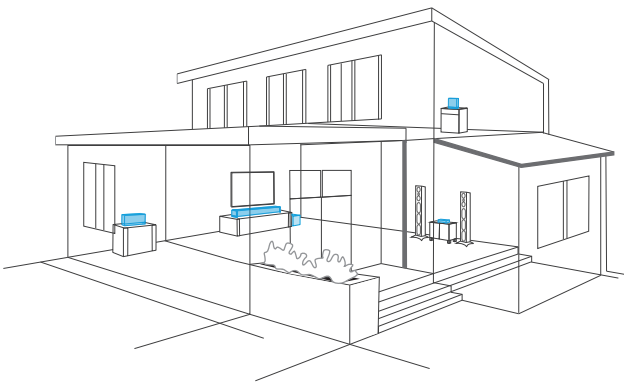
1. W Adapt
2. RCA cable (3')
3. Toslink cable (6')
4. 12V power adapter
5. Setup Guide
6. Optional mounting brackets for custom-installed audio/video racks  
(Screws for securing brackets to adapt included.)



## Getting Started

### Home Network Basics

In general, Wi-Fi is the wireless streaming of data over a network. Here, Wi-Fi audio is the streaming of music throughout a home by connecting multiple speakers and/or devices to a wireless network. The controller for the Definitive Technology Wireless Collection is the Definitive Technology App, which sends music information to each DTS Play-Fi enabled speaker or device.



### Network and System Requirements

It all begins by building a wireless home network, preferably one with a high-speed Internet connection. Here's what you'll need to connect your W Adapt to your network:

- A Wireless Network connected to the internet with an 802.11g router or better.\*
- An Android device with version 2.2 operating system or newer OR an iOS device with version 6.0 operating system or newer.
- The password for your wireless network (if required).

\*Router type is usually listed on the router, itself. Please call the dedicated Definitive Technology Aficionado hotline at 1-800-223-5246 for further questions related to router type.

### For The Best Music Streaming Experience

To ensure your system is operating under the best environment possible, here are a few additional tips:

- For the fastest streaming performance, especially when connecting to multiple speakers simultaneously, an 802.11N router or better is recommended.
- Ensure the Play-Fi device is within wireless reach of your router, or that the signal is not blocked by concrete, brick, or other walls. The quality of your connection can be observed in the Definitive App by the Wireless Strength icon.

### W Adapt Back Panel

- DC IN 12V—power cable connects here
- ETHERNET—wired connection to your router
- 3 AUX IN—(Source 3) 1/8" mini jack connection from a smartphone, tablet or computer
- USB—for firmware updates only
- 2 AUX IN—(Source 2) RCA connection from Blu-ray, cable/satellite
- AUDIO OUT—line level connection to audio/video receiver
- 1 OPT IN—(Source 1) connection from TV
- SPEAKER—Right and Left channel hookups
- Wi-Fi SETUP Button—to connect wirelessly to your Wi-Fi network



### Connecting the W Adapt To Your Receiver

There are two ways to connect your W Adapt to your receiver:

1. Digital Out- this is a coaxial or optical connection to the receiver.  
(Recommended)
2. Audio Out – make an analog RCA connection to the receiver.

## Connecting your W Adapt

### Wi-Fi Setup

1. To ensure easy setup, place your W Adapt near your internet-connected wireless router. When setup is complete, you can move your device anywhere you want to.
2. Connect the included power cable to the W Adapt and a power outlet. The device will power on automatically.
3. The white light on the back will blink quickly for about 20 seconds, after which it will begin to pulse slowly.
4. The slowly pulsing light means your device is ready to connect to your Wi-Fi network.

**NOTE:** *if the Wi-Fi LED is not pulsing slowly, Press and hold the Wi-Fi setup button (for 8 seconds), until you hear the second set of tones.*

5. Download the Definitive Technology App from the Apple App Store or Google Play Store.
6. Launch the app and follow the instructions.



#### Definitive Technology App

for iPhone, iPad  
and Android devices.



#### Utility App

for iPhone, iPad  
and Android devices.

**NOTE:** *To enable Wi-Fi Protected Setup (WPS) mode with a WPS compatible router, press and hold the Wi-Fi button on the W Adapt for 4 seconds or until the first beep. Now push the WPS button on your wireless router. The W Adapt will automatically connect to your network without the need to enter your password.*

### Wired Ethernet Connection

A hard-wired Ethernet connection can provide a faster transfer rate than a wireless connection. All Definitive Technology Wireless Collection Products (except the W Studio) have a dedicated Ethernet port that enables you to create a hard-wired connection directly to your router.

## Apps

### iOS Device Instructions

1. Launch the Definitive Technology app.
2. The app will suggest that a new device is ready to be setup. Click on the device and hit next within the app to take you to setup instruction screens.
3. Exit the Definitive Technology app and go to your Settings on your iOS device.
4. Select Wi-Fi. Ensure that Wi-Fi is enabled. Once enabled, choose from the list the device listed with "Play-Fi" in the name.
5. Once selected, exit the settings menu and return to the Definitive Technology App to select your wireless network. (if password protected, enter your password)
6. When your device is connected to the network, the Wi-Fi light will change from blinking to a solid white.
7. You're connected! From here, feel free to rename your device with one of the preset names, create your own custom name, or skip right to enjoying music.

### Android Device Instructions

1. Launch the Definitive Technology app.
2. The app will automatically find your device and prompt you to set it up. Tap the "Set Up" button.
3. If your Wi-Fi network is protected, enter the password. The app will connect the device to the network.
4. When your device is connected to the network, the Wi-Fi light will change from blinking to a solid white.
5. You're connected! From here, feel free to rename your device with one of the preset names, create your own custom name, or skip right to enjoying music.

### Definitive Utility App

For access to extended functionality, including Product Firmware Updates, Source Selection, and EQ Settings (Definitive W Amp and Definitive W Adapt only when paired with Definitive Technology speakers), download the free Definitive Utility App, available from the App Store or Google Play Store.

**NOTE:** *This app is not required for daily music streaming use.*



### Downloading the DTS Play-Fi PC App

- Visit <https://play-fi.com/windows/deftech>
- Click on "Download Free Version"
- Once downloaded to PC, DTS Play-Fi logo will show up in your Task Manager.
- Click on Play-Fi driver
- Click on any zone to begin controlling.

Call the Definitive Technology Aficionado hotline at 1-800-223-5246 to find out how to upgrade to the Premium Play-Fi driver for multi-zone control capabilities.

# D.

## Working with NAS Drives, PCs, and OSX Devices

The Definitive App is capable of recognizing any Media Server or NAS Drive that is broadcasting over your home network and that's configured for open access using the DLNA protocol.

Using the Play-Fi Windows app, the Definitive Wireless Collection products will play any file capable of being played by the Windows operating system, including all music services. See "Downloading the DTS Play-Fi App" above to learn more.

Because OSX devices don't support DLNA, a third party software (ex. Twonky, Plex or Servio) must be downloaded for them to be visible to the network. Once downloaded, all locally stored content on OSX-based devices will show up within the Definitive Technology app under "Media Server."

## Playing Music

Now that you're connected, open the Definitive Technology app to begin playing music. Start by selecting the preferred music source. The next step is to select the device(s) from which you want to hear the music. When done, click "Next." You can now select the music you want to play.

### Music Choices to Select from Include:



**Your Personal Music Library**—hear all the music on your phone, tablet or computer for the first time in high quality audio and through your Definitive speakers. It never sounded better.



**Internet Radio**—Enjoy radio stations from around the world, in virtually any genre, and all of it free. Internet Radio has 37,000 stations with popular brands like Disney, BBC, NPR, Fox News Radio, Wall Street Journal Radio and more.

**Online Services**—Stream the most popular online music services including Pandora and Songza. For the most updated list of music services, visit [www.definitivetech.com](http://www.definitivetech.com). Services like KKBox, QQMusic and Deezer are available in select countries outside of North America.

## Adding or Controlling Multiple Play-Fi Enabled Devices to your System

The Wireless Collection makes creating a whole house wireless music system as simple as pushing a button or two. Add more speakers, a sound bar, an adapter to an existing audio system. The Definitive App and your home network do the rest.

To add additional Play-Fi devices:

- From the Definitive App home page, choose "Settings."
- From the "Settings" screen, choose "Add Play-Fi Device."
- Follow the app's instructions to add the device to your list.

### Maximum number of rooms/zone supported:

Eight separate wireless source devices (smartphones, tablets, etc.), each with its own source, are supported simultaneously and any wireless source device can stream to 8 playback devices. Due to bandwidth limitations of most wireless networks, we do not recommend more than 16 wireless Play-Fi products on the Wi-Fi network at a given time. With hard-wired Ethernet connections (customary for audio/video racks or in custom installation configurations), up to 256 devices can be theoretically supported. Call the Aficionado hotline for more information.

### Primary vs. Secondary Speakers

Once inside the Definitive Technology app, you will notice that when sending music to your devices, they are grouped into primary and secondary zones. The DTS Play-Fi software requires that a primary speaker be selected to create a new listening session or zone. This is designed to maximize synchronization down to 1 millisecond, thereby eliminating any sound echo that can be found from other ecosystems.

Our recommendation for your listening environment is to always select as your primary device the Play-Fi enabled product with the strongest signal strength. Note, however, that secondary speakers are connected to your primary speaker. As such, if you disable your primary speaker, your secondary speakers will likewise be temporarily disabled until a primary speaker is once again selected.

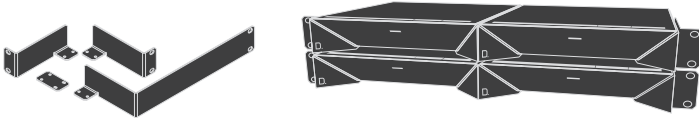
# D.

## W Adapt Specifications

Dimensions	8.46" W x 1.73" H x 8.98" D (215mm W x 44mm H x 228mm D)
Outputs	Digital Optical, 3.5mm Analog, Audio Out, RCA
Inputs	USB-A for firmware updates, Ethernet, Optical In, 1.125" Analog In
Wireless Connectivity	2.4GHz and 5.8GHz
Included in box	power cable, rack mount brackets
Warranty	1 Year

### Custom Installation Kit

Rack-mounting your W Adapt is optional. These mounting brackets are designed to be used with custom-installed audio/video racks. **NOTE:** Long L-shaped bracket is used as a spacer when mounting a single W Adapt.



### Dual-Band Capabilities

Definitive Technology Wireless Collection products all have "dual-band" capabilities. The most commonly used wireless band – 2.4 GHz – can often times be congested and slow, especially in environments where you have many routers sending wireless signals (ex. mixed-use developments like apartment buildings). In these instances, the Wireless Collection can also jump onto the 5 GHz band.

*Please call the dedicated Definitive Technology Aficionado hotline at 1-800-223-5246 for further questions related to dual-band capabilities.*

### Play-Fi Accepted File Formats:

- mp3 (MPEG Layer III)
- m4a and aac (Advanced Audio Coding)
- flac (Free Lossless Audio Codec)
- wav (Waveform Audio File)

### File Quality:

- Lossless file reproduction up to 16-bit/48kHz (CD Quality) and proper file handling for full compatibility with all high-resolution music up to 24bit/192k.
- Plays all format bitrates [kbps]. DTS Play-Fi transmits hi-resolution files, but it does down-sample them so that they can be distributed throughout a home.

## Software Updates

In the spirit of improving the performance and functionality of your system, software updates will be required from time to time. To download those updates, we highly encourage you to register your Definitive product during the setup process. On the home page of the app, scroll down to "Aficionado Services" and follow the instructions.

## Basic Troubleshooting

Under "Settings" on the Definitive App home page, you will find a category called Troubleshooting.

This link will take you to the Play-Fi Knowledge Base <https://play-fi.com/faq?/support>. Note that quite often an issue can be traced back to router or network performance. As always, for help answering any of your questions, please call the Aficionado hotline at 1-800-223-5246.

**IMPORTANT NOTE:** Router speeds and ranges that a manufacturer lists are determined under ideal operating conditions. A router's signal can be affected by walls and their construction materials.

## Technical Assistance

### Contact Us Directly

Please contact the Definitive Technology Wireless Collection Customer Service and Technical Support Group at 1-800-223-5246. To best assist you we are available 7 days a week, Monday – Friday from 9am to 9pm and on Saturdays and Sundays from 10am to 6pm  
email: [info@DefinitiveTech.com](mailto:info@DefinitiveTech.com)

**D.**

Definitive Technology  
11433 Cronridge Dr.  
Owings Mills, MD 21117  
(410) 363-7148  
(800) 228-7148  
[www.definitivetech.com](http://www.definitivetech.com)

email: [info@DefinitiveTech.com](mailto:info@DefinitiveTech.com)  
twitter: @DefinitiveTech

Google Play is a trademark of Google Inc.

Apple and the Apple logo are trademarks of Apple Inc., registered in the U.S. and other countries. App Store is a service mark of Apple Inc.

All other trademarks are the property of their respective owners.